

ALARM OPERATION cont.

the 'DISARM' Remote Control button - the red LED's will flash once and should give two beeps to indicate disarmed.

The range of the wireless transmission is approx. 20 metres - take this into consideration when selecting positions for the components and test before finally fitting in place.

The exact range will be influenced by local conditions, i.e. the number of intervening walls the signal has to pass through, the presence of metal etc.

If the siren unit cannot be armed and disarmed as described above:-

- Check the batteries and battery polarity.
- Reprogram with remote/sensors.

Once the unit is functioning correctly, set it in its operating position and affix with the screws provided. If an outdoor position is selected, make sure that it is some what sheltered from the weather. A too sunny a position may restrict the visibility of the indicator lamps.

This Indoor/Outdoor Siren will be triggered by wireless PIR (passive infra red) Motion Sensor as supplied with the Alarm.

Arming and Disarming the Alarm

To arm the alarm press the 'ARM' button on the remote control once, the alarm unit will emit one beep and the green LED light will flash at even intervals for approximately 30 seconds to indicate the unit is arming.

After 30 seconds the green LED light will flash more briefly and the unit will become fully armed. (Please note when first fitting or replacing batteries, the 30 seconds exit delay may extend to 60 seconds. This is quite normal and will revert back to 30 seconds once the system has re-set itself, automatically).

If the alarm is triggered by an intruder, the red LED on the siren/control unit will flash once and beep as an indication that the alarm has been activated. After an 8 second delay the alarm will sound for approximately 45 seconds and the siren/control unit will

flash red and green. After 45 seconds the alarm will cease but the strobe lights will continue to flash for approximately 15 minutes to show the alarm has been activated recently. After 15 minutes only the green LED light will continue to flash until the unit is disarmed to indicate there has been an activation.

During this time further intruders can be detected as the unit is still armed and the alarm sound will reactivate, along with the lights as above. If any sensor is activated.

To disarm the alarm unit at any time, simply press the 'DISARM' button once. The unit will emit a double beep sound and a single red light flash to indicate that it is now disarmed. There is an 8 second entry delay to allow the alarm to be disarmed during normal operation.

If you choose to mount the siren unit outside, ensure you can see the green LED light so that you know the system has armed, i.e.. The green LED light is on. Please check this before final installation.

This unit has a low battery indicator (a red LED located in the centre of the light diffuser). It will flash when the batteries are running low and need to be replaced. Replace batteries within 2-3 days once low battery is indicated.

Please note battery life may be significantly reduced in cold weather conditions.

Alkaline batteries are recommended for best performance of the unit.

SPECIFICATIONS

Entrance delay time	8 seconds
Exit delay time	30 seconds after no movement at Sensors.
Low battery indicator	Red LED flashes approx. once per second and single beep every 20 seconds.
Alarm sound reset time	1 minute
Intruder indication	Green LED will light after resetting of alarm to indicate a burglar was detected.
Alarm output	Approx. 120dB at 1 metre.
Wireless range of transmitters	20 metres approx.
Movement Activated Sensor range	10 metres approx. and 100° scan angle.
The operating frequency of this unit falls within the permissible frequency range as prescribed by the relevant government authority.	

GUARANTEE*

Arlec guarantees this product against defects of materials and workmanship for a period of 12 months from the date of purchase provided that the product is used in accordance with Arlec's recommendations and within such voltage and current limits as are specified by Arlec in relation to the product. Arlec will at its own option make good, replace with the same or similar product, or provide credit for any product manufactured or supplied by it, which proves to be defective within the limits set out above provided that no repairs, alterations or modifications to the product have been undertaken or attempted, other than by the company or its authorised agents. Should the purchaser wish to make a claim under the guarantee, the product should be returned pre-paid to the place of purchase. This guarantee is in addition to and does not take away from any rights available to the consumer under the Trade Practices Act and the State consumer protection legislation.

Proof of Purchase

- Please retain your purchase receipt for all warranty claims.

For all Sales enquiries

Phone (03) 9727 8860 Fax 1300 360 650

© This instruction leaflet is subject to copyright and must not be reproduced, copied or otherwise used in any way or for any purpose without the consent in writing of the owner, Arlec Australia Pty Ltd (ACN 009 322 105).

* Guarantee excludes batteries.

ARLEC

Wireless Alarm System

DA202

INSTALLATION & OPERATING INSTRUCTIONS



Important! Please read these instructions carefully before use.

Due to continuous research and development the specifications herein are subject to change without notice.

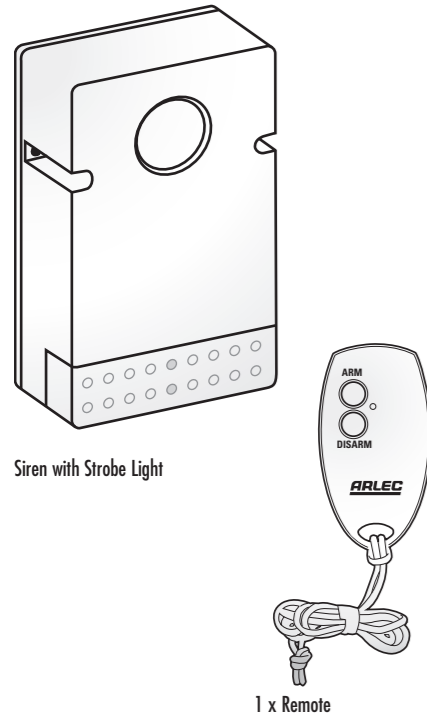


INTRODUCTION

This kit is a wireless remote controlled security system designed for the home or small business. It has been developed to be easy to set up and operate, giving both your family and yourself the security and peace of mind that you deserve.

CONTENTS

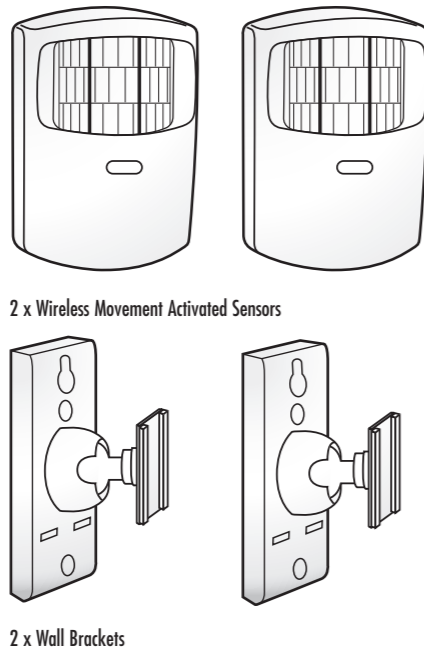
The DA202 consists of 1 x indoor/outdoor Siren, 2 x Wireless Movement Activated Sensors, 2 x Wall Brackets, 1 x Alarm Arm/Disarm Remote and a fastener pack.



This system detects entry to your premises by using Wireless Movement Activated Sensors that utilise infrared technology to detect motion. These sensors detect motion within an 10 metre range and have a scan angle of 100°.

You will also need:

- 4 x AAA alkaline batteries for the Wireless Movement Activated Sensors
 - 2 x D alkaline batteries for the Indoor/Outdoor Siren
- Alkaline batteries are recommended for best performance



INSTALLATION

The initial steps for each component of the kit are:

- Fit the batteries
- Test before mounting
- Fit in place

The range of the wireless transmission is approximately 20 metres – take this into consideration when selecting positions for the components and test before finally fitting in place.

The exact range will be influenced by local conditions, i.e. the number of intervening walls the signal has to pass through, the presence of metal, etc.

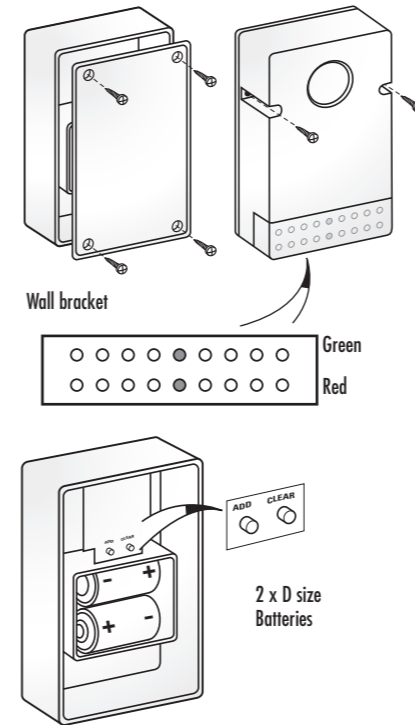
To program this kit, insert batteries as described for all components and follow these steps:

1. Once the batteries are entered into the siren unit, it will beep twice and all the LEDs will flash once, to alert you that it is in 'program mode'.
2. Press the "Test" button in the back of your remote control, using a pencil or paperclip. The siren will beep to alert you that it is added to the program and the red LEDs will extinguish.
3. On the Siren unit, press and hold the "ADD" button until the siren beeps and all the LEDs will flash to alert you that it is in 'program mode'.
4. Press the "Test" button in the battery compartment of one of the motion sensors within 8 seconds. The siren will beep once and illuminate all LEDs to alert you that it is added to the program. The unit will then beep twice and extinguish the LEDs as it leaves 'program mode'.
5. Repeat step 4 with the other sensor.

If you require restarting this process, press and hold the "CLEAR" button to wipe the program.

Indoor/Outdoor Siren Unit

The Siren Unit can be mounted either indoors or in sheltered outdoor positions. It provides a loud alarm siren and flashing LED strobe indicator.



1. Remove the rear cover by removing the 4 screws.
2. Fit 2 "D" size alkaline batteries, observe polarity as marked.
3. Refit the rear cover.
4. The alarm unit green indicator glows to show the status of the alarm (see Alarm Operation Sections). The red low battery indicator will flash to show a low battery condition. If this occurs, change the batteries within two to three days to ensure continued operation.

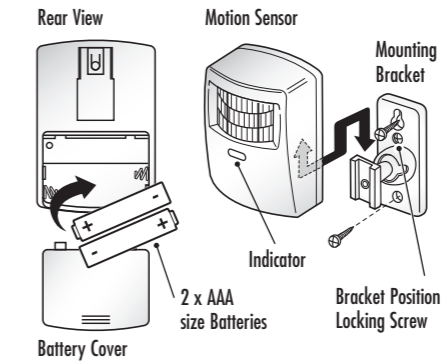
Motion Detector Sensor

This sensor provides your Alarm system with a passive infra red (PIR) motion detector for intruder alarm. The infra red sensor detects movement within an area of 10 metres at 100° angle (when mounted at recommended 2 metre height)

1. Remove the small battery cover screw at the base of the sensor, slide off the battery cover.

INSTALLATION cont.

2. Fit 2 x AAA alkaline batteries and replace cover.
3. When the sensor detects motion, the indicator lamp will flash red, and a signal is transmitted to the Alarm Panel.
4. When batteries are running low, the red LED will flash until batteries are replaced.
5. The sensor will enter into sleep mode after it detects movement.
6. This unit must be mounted indoors only.

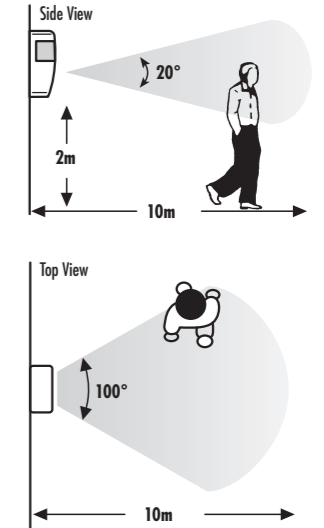


Important

Avoid mounting the sensors near to televisions, computers, mobile phones or low voltage fluorescent light fittings, as these can cause the alarm to malfunction.

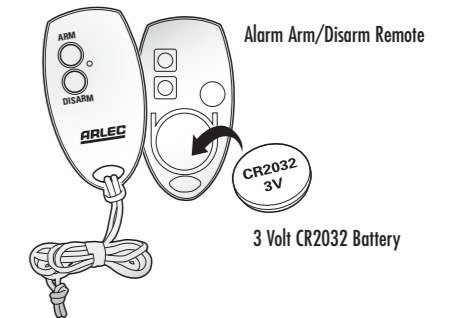
The final position of the sensors should be tested to ensure it is within range of the siren unit before installation.

- A. For best coverage the Room Sensor should be placed at least 2 metres above floor level. See top right of this page for a diagram of the detection zone this unit can achieve.
- B. Once the required detection angle has been chosen, tighten the locking screw on the bracket so that the unit is held at the correct angle.
- C. Slide the unit onto the bracket using the slots at the back.



Alarm Arm/Disarm Remote Battery Replacement

1. Remove the front cover by twisting a coin in the slot at the bottom of the remote. The cover will then slide off.
2. Fit the battery, 3V CR2032 type, refit the battery cover.



ALARM OPERATION

Test by pressing the 'ARM' on button, on the Remote Control of your Wireless Alarm System.

The Indoor/Outdoor Siren unit should make a short beep and the green light illuminate to show the siren has been armed. If so, press