

TROUBLESHOOTING:

If your light does not automatically turn ON at night, it may be caused by one of the following conditions:

1. Battery paper tab is not removed, check the installation section of the instructions.
2. Another night time light source too close to the solar panel, including another solar LED light string.
3. Batteries have not been fully charged or need replacing.
4. The solar panel may be dirty, limiting its exposure to the sun and not allowing batteries to fully charge. Clean the solar panel with a dampened cloth or a paper towel.

NOTE: The performance of your solar light is dependent on your geographical location, weather conditions and seasonal light variations. Overcast days and part shade will reduce brightness and operating time.

WARRANTY

Arlec guarantees this product in accordance with the Australian Consumer Law.

Arlec also warrants to the original first purchaser of this product ("you") from a retailer that this product will be free of defects in materials and workmanship for a period of 12 months from the date of purchase; provided the product is not used other than for the purpose, or in a manner not within the scope of the recommendations and limitations, specified by Arlec, is new and not damaged at the time of purchase, has not been subjected to abuse, misuse, neglect or damage, has not been modified or repaired without the approval of Arlec and has not been used for commercial purposes ("Warranty").

If you wish to claim on the Warranty, you must, at your own expense, return the product, and provide proof of original purchase and your name, address and telephone number, to Arlec at the address below or the retailer from whom you originally purchased the product within 12 months from the date of purchase.

Arlec will (or authorise the retailer to) assess any claim you may make on the Warranty in the above manner and if, in Arlec's reasonable opinion, the Warranty applies, Arlec will at its own option and expense (or authorise the retailer to) replace the product with the same or similar product or repair the product and return it to you or refund the price you paid for the product. Arlec will bear its own expenses of doing those things, and you must bear any other expenses of claiming on the Warranty.

The Warranty is in addition to other rights and remedies you may have under a law in relation to the product to which the Warranty relates.

Our goods come with guarantees that cannot be excluded under the Australian Consumer Law. You are entitled to a replacement or refund for a major failure and for compensation for any other reasonably foreseeable loss or damage. You are also entitled to have the goods repaired or replaced if the goods fail to be of acceptable quality and the failure does not amount to a major failure.

ARLEC

Arlec Australia Pty. Ltd. ACN 009 322 105
("Arlec") gives the Warranty.
Arlec's telephone number, address and email address are:

Customer Service: (03) 9982 5111

New Zealand Toll Free: 0800 003 329
Building 3, 31 – 41 Joseph Street,
Blackburn North, Victoria, 3130
Blackburn North LPO, P.O. Box 1065,
Blackburn North, 3130

Email: custservice@arlec.com.au

CPIN002887

LVS133

SOLAR

**DUAL TRADITIONAL
GARDEN LIGHT**

ARLEC

LED

- RECHARGEABLE BATTERY INCLUDED
- 2 WHITE LEDS
- WEATHER RESISTANT CASING
- POWERED BY THE SUN
- ENERGY SAVING

INSTRUCTION MANUAL

PLEASE READ THESE INSTRUCTIONS CAREFULLY.
KEEP THESE INSTRUCTIONS IN A SAFE PLACE
FOR FUTURE REFERENCE.

*DUE TO CONTINUOUS RESEARCH AND DEVELOPMENT THE
SPECIFICATIONS IN HERE ARE SUBJECT TO CHANGE WITHOUT NOTICE.*



ARLEC

LED

SOLAR

DUAL TRADITIONAL GARDEN LIGHT

- RECHARGEABLE BATTERY INCLUDED
- 2 WHITE LEDS
- WEATHER RESISTANT CASING
- POWERED BY THE SUN
- ENERGY SAVING

The Arlec Solar LED garden stake light sets provide self contained LED lighting. Power to operate the LED's is derived from batteries charged using the solar panel mounted on the top of the main unit. The garden LED lighting can be used to decorate gardens or to light ponds, paths or steps.

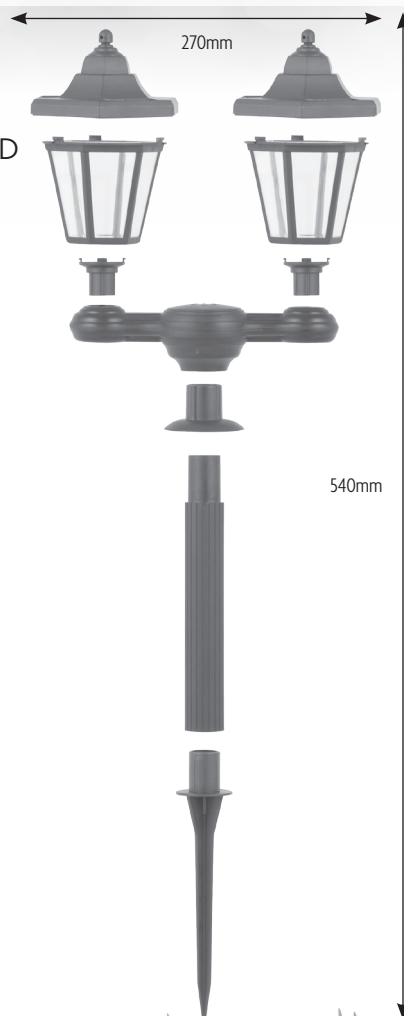
THE LIGHTS

The lights are non-replaceable LED type but have been designed to last for long life.

ASSEMBLY

Assembly is required prior to installation; unpack all the items from the box.

Assemble the unit as shown in the adjacent image.



LVS133

INSTALLATION

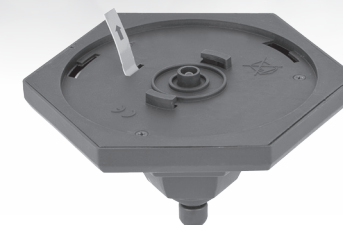
NOTE: BATTERIES MAY REQUIRE SOLAR CHARGING PRIOR TO OPERATION. TO CHARGE, REMOVE THE PAPER TAB FROM THE BATTERY COMPARTMENT AND LEAVE THE UNIT IN A SUNNY LOCATION WITH SOLAR PANEL EXPOSED TO SUNLIGHT.

Choose a location and with firm pressure push the stake into the ground. If the ground happens to be too hard, make a starter hole with a screwdriver or similar tool.

Make sure the stake is completely pushed in to the ground for the light figure to be secured properly.

Remove the light head from top of the lens by twisting it in an anti-clockwise direction.

Pull the battery paper tab from battery compartment allowing the battery to make contact.



REASSEMBLE.

TO CHECK OPERATION OF THE UNIT, COVER THE SOLAR PANEL WITH A DARK CLOTH. IF THE LIGHTS DO NOT COME ON THE BATTERIES REQUIRE CHARGING. LEAVE THE UNIT IN A SUNNY LOCATION WITH SOLAR PANEL EXPOSED TO SUNLIGHT.

NOTE: The solar panel housing must be located in a position so as to achieve exposure to the greatest possible amount of sunlight to assist in adequate charging.

OPERATION

The lights will automatically turn on in the night.

The solar panel will charge the batteries during daytime and the amount of charge may vary depending upon the sun load.

The run time of the lights depends upon the charge of the batteries which may vary from 0-6Hrs.

NOTE: Re-charging of the battery will be achieved through ideal conditions, while seasonal variations, overcast days and part shade will correspond with a reduction in length of operation.

BATTERY REPLACEMENT

Should the lights start to dull or stay on for shorter lengths of time we recommend that the rechargeable battery should be replaced as given below:

Remove the light head and unscrew the 3 screws on the back of the solar panel, remove the back cover taking care not to damage any wires.

Replace the used battery with a new one making sure the polarity is correct.

Replace cover and secure with the existing 3 screws.

NOTE: The battery should only be replaced with a rechargeable "AA" size NiMH battery of the same capacity as the original one supplied with the unit