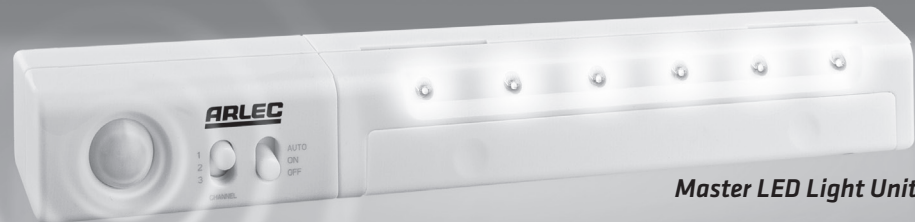


WIRELESS LED SENSOR LIGHT KIT

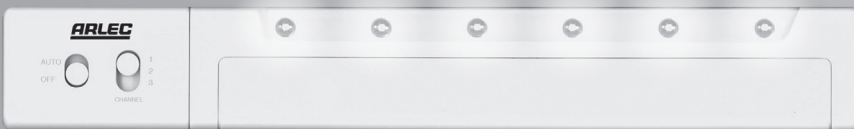
Installation and Operating Instructions



Master LED Light Unit



Slave LED Light Unit



Slave LED Light Unit

NL0017

IMPORTANT! PLEASE READ THESE INSTRUCTIONS CAREFULLY.

INTRODUCTION

The Arlec Wireless LED sensor light kit incorporates a P.I.R (Passive Infra Red) sensing device and provides illumination for areas to give additional convenience, safety and security.

There are three modes, ON, OFF and AUTO, in which the Master LED light can operate. When the Master LED light unit is on AUTO mode and the ambient light level is low, the P.I.R sensor continuously scans the operating zone and immediately switches the LED lights ON, when it detects the movement in that area. This means that whenever movement is detected within the range of the sensor, the LED lights will switch on automatically to illuminate pathways, steps, inside cabinets, or whatever area you have selected. Applications are limited only by your imagination.

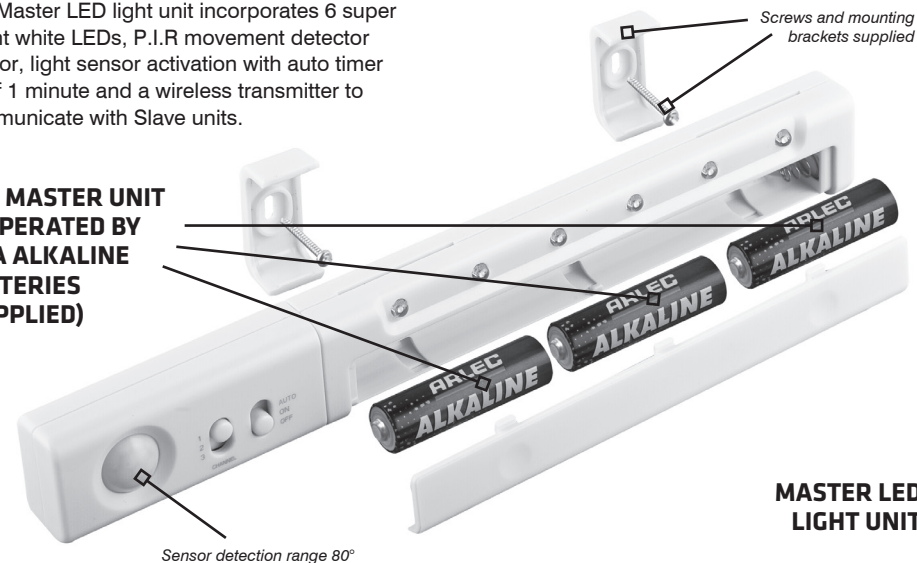
The P.I.R (Passive Infra Red) sensor will detect body heat/movement over an area of approximately 5 metres with a 80° scan area. The P.I.R measures the infra red light radiating from the objects that passes its angle view.

INSTRUCTIONS

MASTER UNIT

The Master LED light unit incorporates 6 super bright white LEDs, P.I.R movement detector sensor, light sensor activation with auto timer off of 1 minute and a wireless transmitter to communicate with Slave units.

THE MASTER UNIT IS OPERATED BY 3 AA ALKALINE BATTERIES (SUPPLIED)



MASTER LED LIGHT UNIT

SELECTING THE MODE:

There are three different MODES, AUTO, ON and OFF in which the Master unit can operate.

The Slave LED light units have only two modes which are AUTO and OFF. The Slave LED light units follow the Master LED light mode under this condition that their is AUTO and they are on the same channel as the Master LED light unit.



Master LED Light Unit Controls



Slave LED Light Unit Controls

ON MODE:

In this MODE the Master LED light unit is permanently switched on. The Slave LED light units will be permanently switched on as well, if they are on the same channel as the Master LED light unit.

NOTE: When the Master LED light unit mode in ON and the Slave LED light units mode is Auto, if you change the mode of the Slave LED light units to OFF, the Slave LED lights will be turned OFF. For the Slave LED lights to turn ON again, you should first change the Master LED light unit mode to OFF, then re-change its mode to ON. After that, change the Slave LED light units to AUTO.

OFF MODE:

In this MODE the Master LED light is permanently switched to OFF and does not react to the body heat/movement. The Slave LED light units will be OFF, too if they are on the same channel as the Master LED light unit.

AUTO MODE:

In this MODE the Master LED light unit will switch on only when the P.I.R Motion detector detects heat/movement and the ambient light level is low. The Slave LED light units will be switched on automatically, if they are on the same channel as the Master LED light unit.

SELECTING THE CHANNEL:

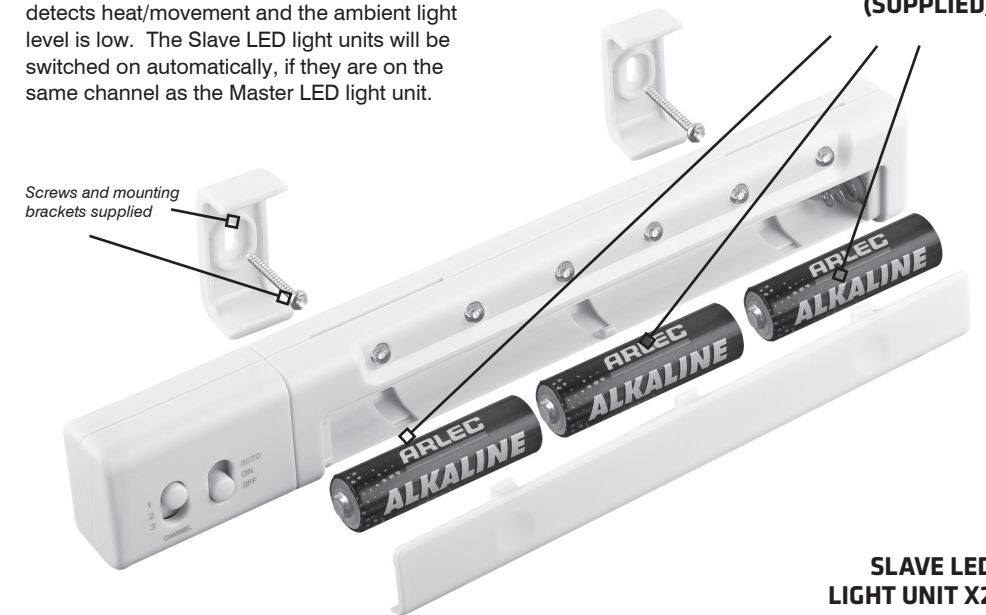
There are three channels, 1, 2 and 3 which can be selected. Before use, please make sure that the same channel has been set among Master LED light unit and both Slave LED light units. The extra channels can be used to separately control lights using multiple sets of the kit from more than one Master unit.

SLAVE LED LIGHT UNITS:

The Slave units consisted of 6 super bright white LEDs and one wireless receiver. The RF reception range in open area is 30m from the Master LED light unit. Each Slave LED light is operated by 3 AA Alkaline batteries.

There is a delay of up to approximately 2 seconds between the times that the Master LED light changes its MODE until the time that the Slave LED light units follow the MODE.

THE SLAVE UNITS ARE OPERATED BY 3 AA ALKALINE BATTERIES (SUPPLIED)



SLAVE LED LIGHT UNIT X2

WARRANTY

Arlec guarantees this product in accordance with the Australian Consumer Law.

Arlec also warrants to the original first purchaser of this product ("you") from a retailer that this product will be free of defects in materials and workmanship for a period of 12 months from the date of purchase; provided the product is not used other than for the purpose, or in a manner not within the scope of the recommendations and limitations, specified by Arlec, is new and not damaged at the time of purchase, has not been subjected to abuse, misuse, neglect or damage, has not been modified or repaired without the approval of Arlec and has not been used for commercial purposes ("Warranty").

If you wish to claim on the Warranty, you must, at your own expense, return the product, and provide proof of original purchase and your name, address and telephone number, to Arlec at the address below or the retailer from whom you originally purchased the product within 12 months from the date of purchase.

Arlec will (or authorise the retailer to) assess any claim you may make on the Warranty in the above manner and if, in Arlec's reasonable opinion, the Warranty applies, Arlec will at its own option and expense (or authorise the retailer to) replace the product with the same or similar product or repair the product and return it to you or refund the price you paid for the product. Arlec will bear its own expenses of doing those things, and you must bear any other expenses of claiming on the Warranty.

The Warranty is in addition to other rights and remedies you may have under a law in relation to the product to which the Warranty relates.

Our goods come with guarantees that cannot be excluded under the Australian Consumer Law.

You are entitled to a replacement or refund for a major failure and for compensation for any other reasonably foreseeable loss or damage. You are also entitled to have the goods repaired or replaced if the goods fail to be of acceptable quality and the failure does not amount to a major failure.

ARLEC

Arlec Australia Pty. Ltd. ACN 009 322 105 ("Arlec") gives the Warranty.
Arlec's telephone number, address and email address are:

CUSTOMER SERVICE: (03) 9982 5111

Building 3, 31 – 41 Joseph Street, Blackburn North, Victoria, 3130
Blackburn North LPO, P.O. Box 1065, Blackburn North, 3130
Email: custservice@arlec.com.au

WHERE TO FIT YOUR SENSOR LIGHT

Mount the Master unit in a position where it will pick up movement in the desired application. The Slave units can then be mounted at will to direct light as needed. Experiment with positions first before permanently mounting. To mount, use the brackets and screws supplied, or double sided tape.

EXAMPLES:

1. For lighting a pantry, the Master might be put at the top of the pantry just inside the door, pointing down. The Slaves could be put under the shelves to illuminate the contents.
2. In an entry hall, the Master could be put near the door on the skirting board with the Slaves at intervals along the hall to light your way as you enter.

BATTERY INSTALLATION

Before use please install batteries in each of the three (Master and Slave units).

1. Slide the battery door to open
2. Install 3 pieces of AA Alkaline batteries, matching the polarity of the batteries to the markings inside.
3. Replace the battery door

NOTE: *The batteries should be replaced when the light of the LEDs become dim. Do not allow spent batteries to remain in the units.*

USER HINTS

1. Do not install your wireless LED light units where the movement can be exposed to direct sunlight
2. Do not install on or near heat sources such as radiators, bright lights or near cook tops or stove. This indirect heat may cause the P.I.R sensor to activate.
3. Avoid installing your Wireless LED light units where severe changes in ambient temperature may occur.

4. On very hot days the sensitivity, of the sensor may be decreased due to the ambient temperature being closer to normal body temperature, this is unavoidable.
5. The units are not weatherproof, so are not suitable for outdoor use.
6. If you experience interference from other wireless control devices (e.g. door chimes, garage door operators, etc) try changing the channel.

MAINTENANCE

To avoid dust build up and ensure proper functioning of your Wireless LED Light Units; wipe the sensor lens lightly with a damp cloth every three months.

SPECIFICATIONS

Voltage Consumption:	4.5V DC from 3 x AA cells in each unit
Detection System:	Passive Infra Red (P.I.R)
Detection Range:	Approx. 5 metres at 80° scan
Auto timer off:	1 minute approximately
Light Level Sensor:	Inhibits operation in brighter ambient light
Radio Frequency:	433 MHz
Range of radio frequency control:	30 metres

NOTE: *Range will be reduced if there are physical obstructions (e.g. walls) between the Master and Slaves. Metal obstructions may obscure signal completely.*

