

WARRANTY

Arlec guarantees this product in accordance with the Australian Consumer Law.

Arlec also warrants to the original first purchaser of this product ("you") from a retailer that this product will be free of defects in materials and workmanship for a period of 12 months from the date of purchase; provided the product is not used other than for the purpose, or in a manner not within the scope of the recommendations and limitations, specified by Arlec, is new and not damaged at the time of purchase, has not been subjected to abuse, misuse, neglect or damage, has not been modified or repaired without the approval of Arlec and has not been used for commercial purposes ("Warranty").

If you wish to claim on the Warranty, you must, at your own expense, return the product, and provide proof of original purchase and your name, address and telephone number, to Arlec at the address below or the retailer from whom you originally purchased the product within 12 months from the date of purchase.

Arlec will (or authorise the retailer to) assess any claim you may make on the Warranty in the above manner and if, in Arlec's reasonable opinion, the Warranty applies, Arlec will at its own option and expense (or authorise the retailer to) replace the product with the same or similar product or repair the product and return it to you or refund the price you paid for the product. Arlec will bear its own expenses of doing those things, and you must bear any other expenses of claiming on the Warranty.

The Warranty is in addition to other rights and remedies you may have under a law in relation to the product to which the Warranty relates.

Our goods come with guarantees that cannot be excluded under the Australian Consumer Law.

You are entitled to a replacement or refund for a major failure and for compensation for any other reasonably foreseeable loss or damage. You are also entitled to have the goods repaired or replaced if the goods fail to be of acceptable quality and the failure does not amount to a major failure.

ARLEC

Arlec Australia Pty. Ltd. ACN 009 322 105 ("Arlec") gives the Warranty.
Arlec's telephone number, address and email address are:

CUSTOMER SERVICE: (03) 9982 5111

Building 3, 31 – 41 Joseph Street, Blackburn North, Victoria, 3130
Blackburn North LPO, P.O. Box 1065, Blackburn North, 3130
Email: custservice@arlec.com.au

Installation Instructions

ARLEC

72

**CUPBOARD
SLIM LINE LIGHT
WITH AUTO
ON/OFF**



**D
I
Y**

IMPORTANT!

Please read these instructions carefully.

Due to continuous research and development the specifications in here are subject to change without notice.

UC0090

OPERATION

This product incorporates an Auto ON/OFF function that causes the light to automatically switch off when a solid object moves within close proximity to the sensing aperture. The sensing aperture is positioned in the middle of the upper metal housing see Figure 1.

This feature can be used to illuminate the inside of a cupboard or wardrobe when the door is opened, or light up the inside of a draw when it is accessed.

INSTALLATION

A plug-in transformer is provided to operate this light at SELV (Safety Extra Low Voltage). Ensure that there is a power outlet available to supply the transformer as shown below.

OVERALL LAYOUT SHOWING ELECTRICAL CONNECTIONS

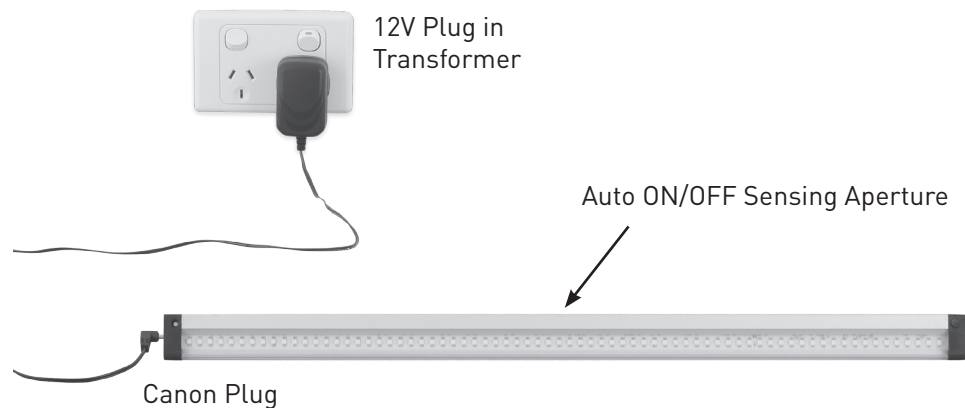
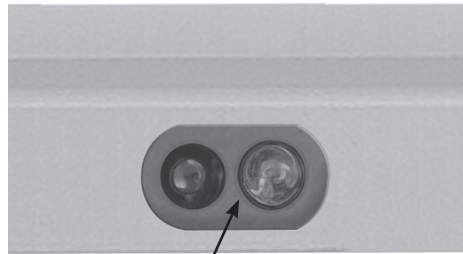


Figure 1.



Auto ON/OFF Sensing Aperture

Example application

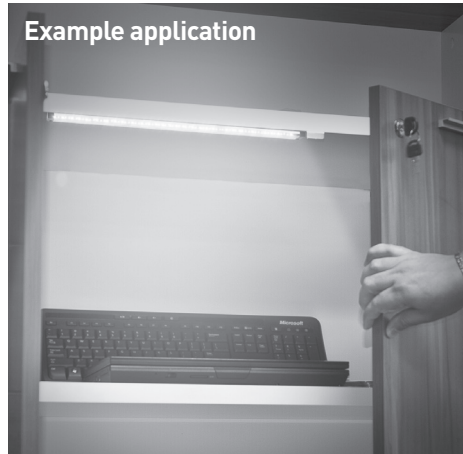
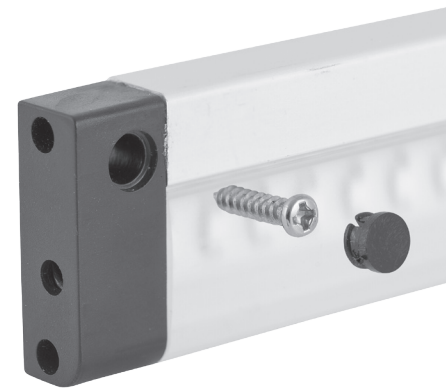


Figure 2.



Remove the mounting hole covers and fix into position using the two screws supplied. When fixed into position replace covers to hide the screw heads as shown in figure 2.

MAKING THE ELECTRICAL CONNECTIONS

When installation is complete connect the LED Bar Light to the plug-in transformer via the cannon plug and connecting socket within the side of the light fitting as shown in Figure 3.

Figure 3.



Then connect the plug-in transformer to the mains power outlet as shown in Figure 4.

Figure 4.



SAFETY INFORMATION

- This product is designed for indoor use only.
- There are no user serviceable parts. If the plug-in transformer is damaged or becomes inoperative, it must only be replaced by the same type of transformer (LED Driver) with the same electrical operating parameters.

CARE AND CLEANING

- Always switch off power before cleaning.
- Clean the exterior with a damp cloth, then wipe dry.
- Do not use abrasive cleansers or solvents.